

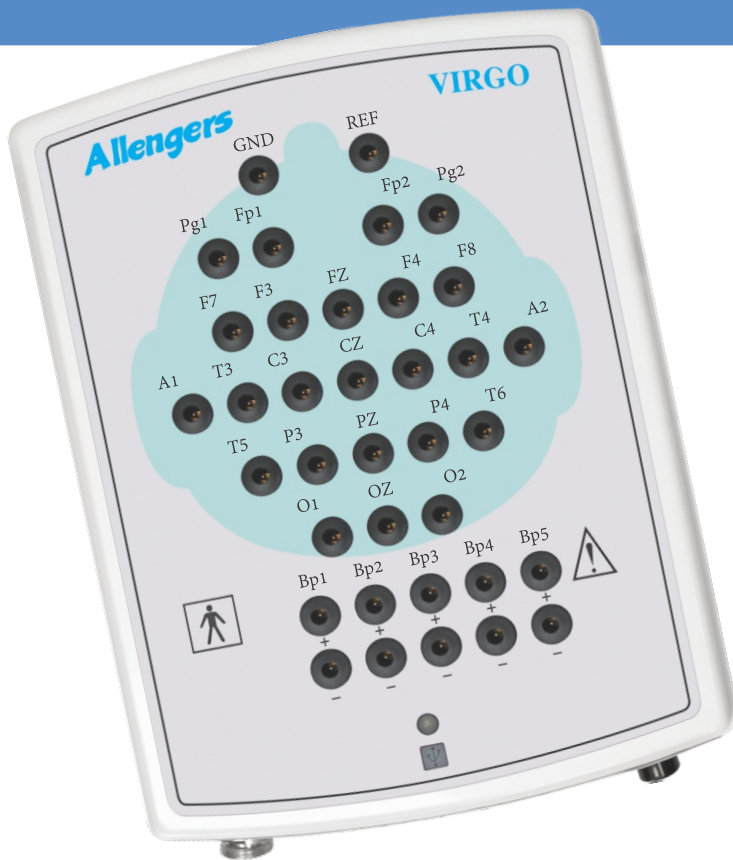
# Allengers

*Passion for excellence*



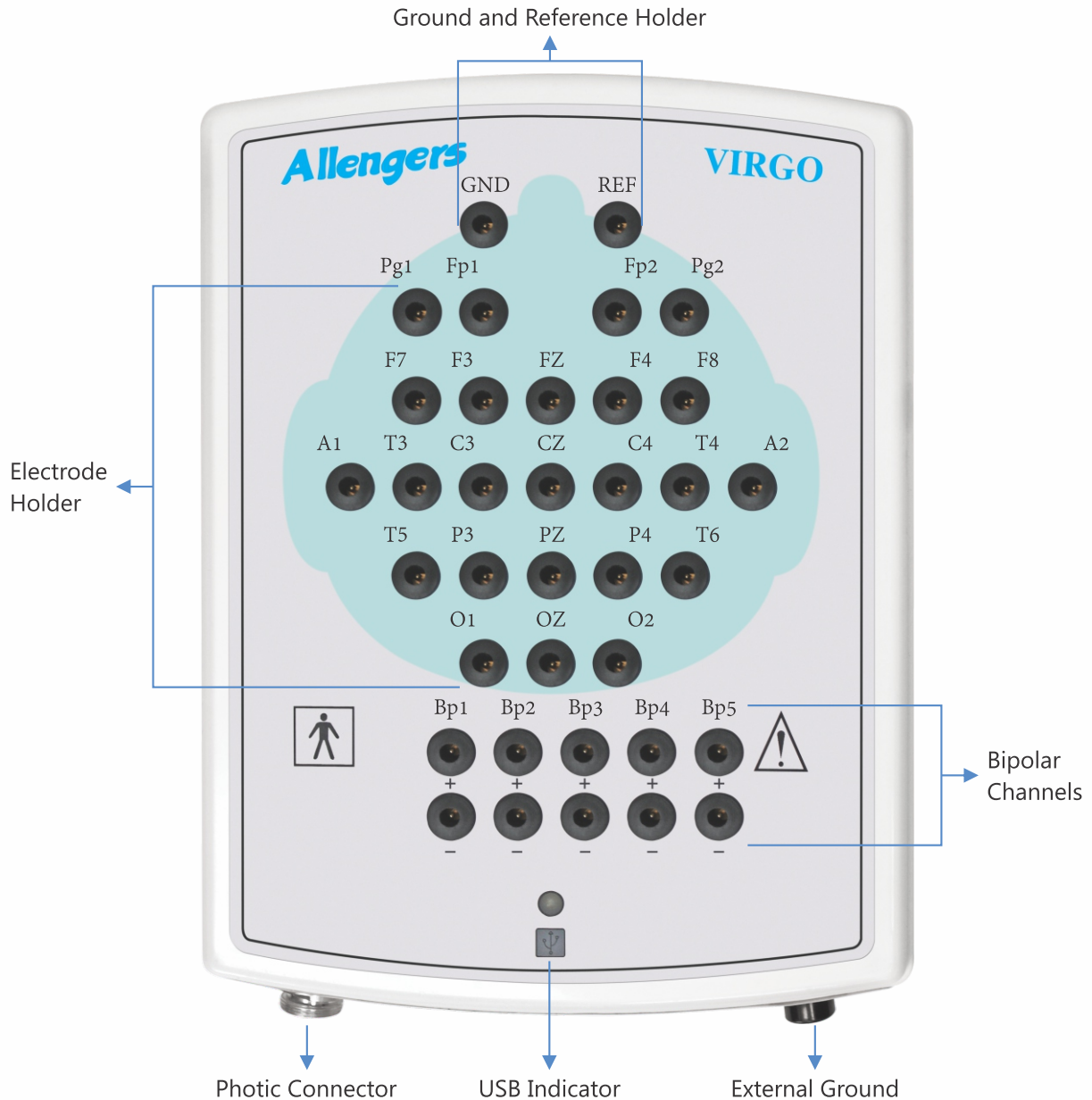
## VIRGO

EEG (Traveler / Portable)





# Virgo - EEG Head Box



## SALIENT FEATURES

- Integrated Impedance check for electrode connectivity.
- Optional - synchronized high-resolution MPEG-4 video with EEG recording.
- User editable unlimited number of montages.
- Free lifetime online support & software up gradation.
- Fully portable & easy to use in ICU/ Bed side.
- Flexible photic stimulator based on high intensity LEDs.
- Easy to use & user friendly with many other features.
- Optional SPO2,HR & Pleth recording facility.

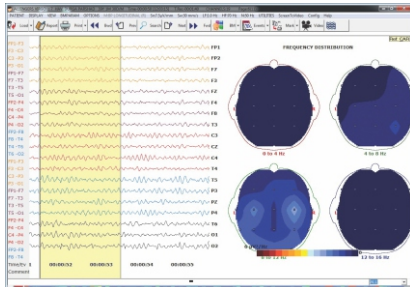


# ADVANCED VOLTAGE MAPPING

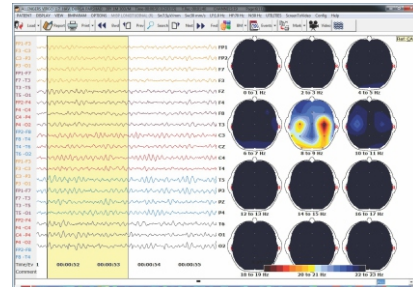
## Fast review and advanced EEG analysis

Whole head maps provide a complete overview and a better interpretation of the topography of EEG abnormalities. Just select the region to obtain the head maps. Click on a particular view to obtain a series of maps showing the change over time.

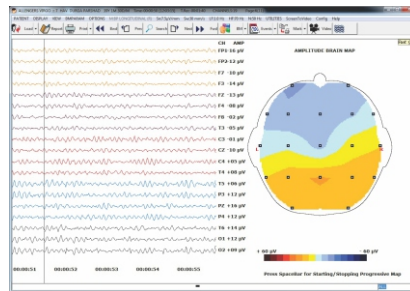
- Hemispherical comparison with left view, right view, top view.
- Frequency spectra with Peak Power Frequency (PPF), Spectral Edge Frequency (SEF), Median Power Frequency (MPF).
- Successive amplitude brain maps with different views with 8 mSec interval.



Frequency distribution showing delta, theta, alpha and beta activities



Frequency progressive with 12 brain maps covering various frequencies



Amplitude Brain Map

## ANALYSIS SOFTWARE

Review, mapping, remontaging, filtering and FFT

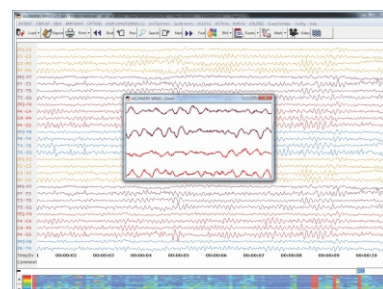
- Voltage and current source density mapping.
- FFT frequency analysis and frequency and phase mapping.
- Spike and seizure detection.

## EEG AUTORUN CD

- Review EEG data and patient files anywhere without special software.
- Re-format and re-filter EEG data on your PC.

## APPROPRIATE AND EFFICIENT REVIEW

- Customizable 64 trace display - upto 64 traces, time & comments can be displayed for easier recognition and comparison.
- Zoom window - you can easily magnify the waveform by moving the mouse cursor and zoomed image will be shown in zoom window.



## SALIENT FEATURES

- Facility to send EEG data through e-mail.
- Light weight and compact amplifier comfortable for adults and children.
- USB interface enables PC or Laptop based acquisition stations.
- Synchronized high-resolution MPEG-4 video.
- Flexible Photic Stimulator based on high intensity LED's.
- Integrated impedance check for electrode connectivity.
- Unlimited number of montages.
- Unlimited continuous recording along with video (optional).
- Facility to reformat of gain, filter and sweep speed acquire / analysis.
- Record and review EEG simultaneously and can write comments during review.
- Split screen facility for viewing channels simultaneously comprising three different montages at the same time.
- Facility to write the data on Autorun CD/DVD.
- Facility of Auto spike detection.
- Facility to measure amplitude and frequency at any portion of EEG.
- Amplitude integrated EEG (aEEG).
- Facility to record EEG in media player format for presentations.
- Work on all MS Windows platforms 32 bit & 64 bit.
- Inbuilt European Date Format (EDF) converter.
- Online support/Online update/Print to PDF/Email PDF through software only.
- Optional SpO2, HR and Pleth recording facility.
- Digitally Certified software and drivers from Microsoft Authorized Certifying Authority to ensure reliability and security.
- Facility to study Heart Rate Variability (HRV).
- Facility to send EEG data in DICOM format to PACS Server.
- Facility to export data to MATLAB/LAB View or compatible software.
- Dot Density Array (Amplitude based DSA bar) in color coded format for fast data retrieval.
- Print preview of pages marked for printing.

## TECHNICAL SPECIFICATIONS

### DATA ACQUISITION

- Number of Channels : 24/32/40
- Input Impedance : >100M  $\Omega$
- Internal Noise Level : <1 $\mu$ V P-P (0.53 Hz to 120 Hz)
- CMRR : >100dB
- Sampling Rate : 1024 / 256 Hz at ADC (256 Hz for storage)
- ADC : 16 bit
- High-Cut Filter : 100 Hz
- Low-Cut Filter : 0.05 Hz
- Interface : USB

### DATA PROCESSING

- Sensitivity : 1, 2, 3, 5, 7.5, 10, 15, 20, 30, 50, 75, 100, 150, 200, 300, 500, 750, 1000  $\mu$ V/mm
- Low-Cut Filter : 1.6 (0.1), 0.53 (0.3), 0.32 (0.5), 0.16 (1.0), 0.053 (3.0), 0.032 (5.0) Hz and user define filter
- High-Cut Filter : 10, 15, 35, 70, 100 Hz and user define filter
- Notch Filter : 50 or 60 Hz, ON/OFF facility
- Calibration Waveform
  - a) Calibration Level : 2 to 1000  $\mu$ V
  - b) Calibration Rate : 1 to 10 Hz
- Impedance Check : Indication on screen : All electrodes are displayed on the screen in electrode position layout. Electrodes with impedance higher than the preset impedance threshold are highlighted automatically.
- Montages : Unlimited no. of display montages
- Marking Signals : Photic Stimulation, Hyperventilation, External Event Mark
- Sweep Speed : 7.5, 15, 30, 60 mm/Sec
- Hyperventilation : Stimulation period 1, 2, 3, 4, or 5 minutes

### PHOTIC STIMULATION

- Stimulation Mode : 2 Modes (25 steps programmable, 1 single)
- Mode of operation : Continuous operation with pause time
- Stimulation Rate : 1 to 60 Hz
- Stimulation Period : 1 to 60 seconds
- Light Source : High intensity white LED's

### DISPLAY

- Graphic Signal Resolution : Any resolution  $\geq$ 1024 x 768
- No. of Display Channels : Upto 64 channels
- Display Modes : Overwrite and page-by-page
- Waveform Display Color : Any
- Waveform Display On/Off : Yes
- Waveform Freeze : Yes
- Video : Optional
- Sweep Speed : 5, 10, 20, 40 seconds data/page
- Event Marking : Yes

## ACCESSORIES



Photoc Flash



Conductive Paste



EEG Electrodes



Photic Charger



Event Marker



Nuprep Jelly (optional)



Camera (optional)



TV Tuner Card (optional)

### ALLENGERS OTHER PRODUCTS

- **CARDIOLOGY** : - Tread Mill Test (TMT) - Multipara Monitor (MPM) - Electrocardiogram (ECG 3, 6 & 12 CH)  
- Cathlab Fixed/Mobile
- **NEUROLOGY** : - Electromyograph (EMG) - Polysomnograph (PSG) - Neuroplot (EEG)
- **UROLOGY** : - Holmium Laser System - Lithotripter (E.S.W.L.)
- **RADIOLOGY** ■ **ORTHO, GASTRO, NEURO SURGERY & INTERVENTIONAL** ■ **IT SOLUTIONS**

MANUFACTURED & MARKETED DOMESTICALLY BY :

**ALLENGERS GLOBAL HEALTHCARE (P) LTD.**

Ph : +91 172 6618000-99, 2621913 Fax : +91 172 2621912 E-mail : sales.enquiry@allengers.net

MARKETED INTERNATIONALLY BY :

**ALLENGERS MEDICAL SYSTEMS LTD.**

Ph : +91 172 6618081, 6618082 Fax : +91 172 2621912 E-mail : exports@allengers.net

**CORPORATE OFFICE** : S.C.O. 212-213-214, Sector 34-A, Chandigarh-U.T. 160 022 (India)

Please visit [www.allengers.com](http://www.allengers.com) for more information Toll Free No. 1800-266-8800 (India)

For detailed technical specifications, please refer to the respective product data sheets / quotation.

Due to continuous product improvements, specifications and appearance are subject to change without prior notice.